

URBAN SPORTS EQUIPMENT AS A REVITALIZING TOOL IN SAN BORJA, LIMA



Arturo Palomino / Senior Capstone / Mentor: Sandra Bernal

Capstone Project: Sustainable Built Environments - 2024

INTRODUCTION



In San Borja, the rise of mixed-use buildings is altering nearby residential zones, leading some residents to abandon these areas.



This study explores how tennis courts can promote sustainability through physical activity, community engagement, and environmental integration.

RESEARCH QUESTION

“How can the introduction of tennis courts in San Borja, Lima, contribute to community revitalization and address the challenges of urban land use changes from residential to commercial spaces?”



METHODOLOGY

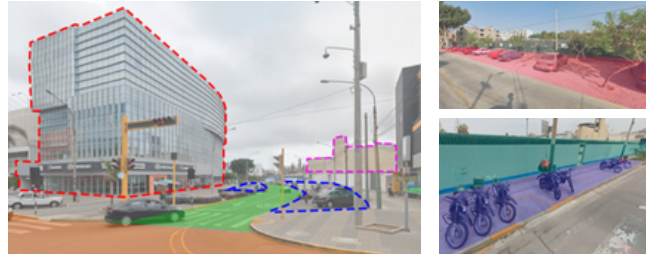
THE UPPER MIDDLE CLASS NEAR LA RAMBLA, SAN BORJA

- 1 PARTICIPANT OBSERVATION**
Documenting their current use of recreational spaces
- 2 PERCEPTION ANALYSIS**
Conducted with 30 volunteers
- 2.1 INTERVIEWS**
Their views on inclusivity, social stratification, and health impacts
- 2.2 SURVEY**
Their perceptions of tennis courts in terms of sustainability, inclusivity, and health impacts.

DATA / RESULTS

1 PARTICIPANT OBSERVATION

Car dependency and parking encroach on public spaces, cause congestion and insecurity. Green areas are underused, and properties are often abandoned or unfinished.



RESIDENCE **PARKING** **MIXED USE BUILDING**
SECONDARY ROAD **MAIN AVENUE**

Invasion of pedestrian sidewalks

2 PERCEPTION ANALYSIS

Conducted with 30 volunteers

2.1 INTERVIEWS - SOCIAL APPROACH

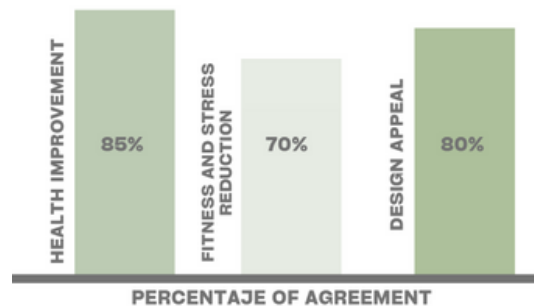
70% of respondents believe that tennis courts would attract the upper middle class

INCLUSIVITY AND ACCESSIBILITY CHALLENGES FOR PROPOSED TENNIS COURTS



2.2 SURVEY - HEALTH APPROACH

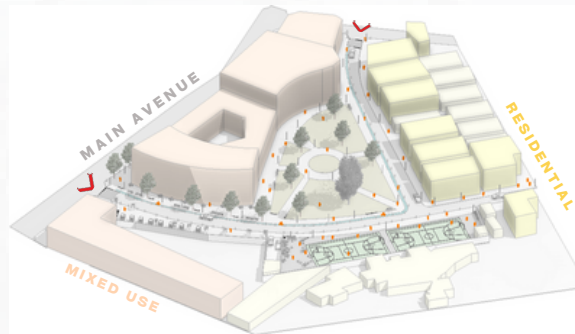
The 85% agree that increased access to tennis courts would improve physical and mental health



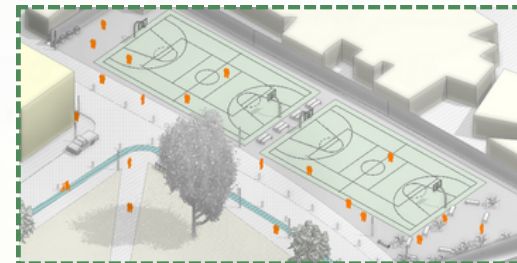
DISCUSSION AND CONCLUSION

The tennis courts will revitalize unused spaces near "La Rambla", attracting families and older adults. Residents see the courts as a way to improve social connection and well-being, as long as issues like affordability and security are addressed. Surveys show the community supports the idea, and the courts' design will meet sustainable and inclusive needs. These courts will help improve underused areas and create a more active social environment, offering a practical example of urban regeneration.

URBAN PROPOSED DESIGN

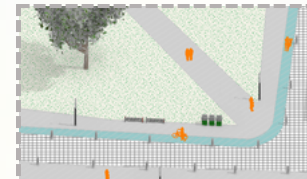


A Tennis and basketball courts (20x36m)



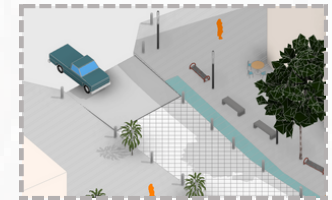
- Higher property values (Due to proximity to recreational amenities)
- Reduces social isolation (Public sports areas connect different demographic groups)
- More green space (Replacing parking lots with courts increases green areas)

D Bike lane system around the park with safety features



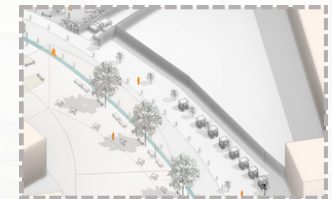
- Promoting sports = Better quality of life
- Sustainable mobility
- More recreational options = Higher land value

B Speed control upon entry max. speed : 10km/h



- Improvement of pedestrian safety perception
- Fewer traffic accidents
- Less damage to the streets = less maintenance
- Less environmental and noise pollution

C Underground parking + Public space



- Boost to Local Businesses
- Increased Land Value: Greater public spaces
- Improved Quality of Life: Larger public spaces social interaction
- Better Accessibility: Wider and more inclusive spaces.
- Reduction in Urban Heat Island Effect: The inclusion of greenery, which helps lower urban temperatures.